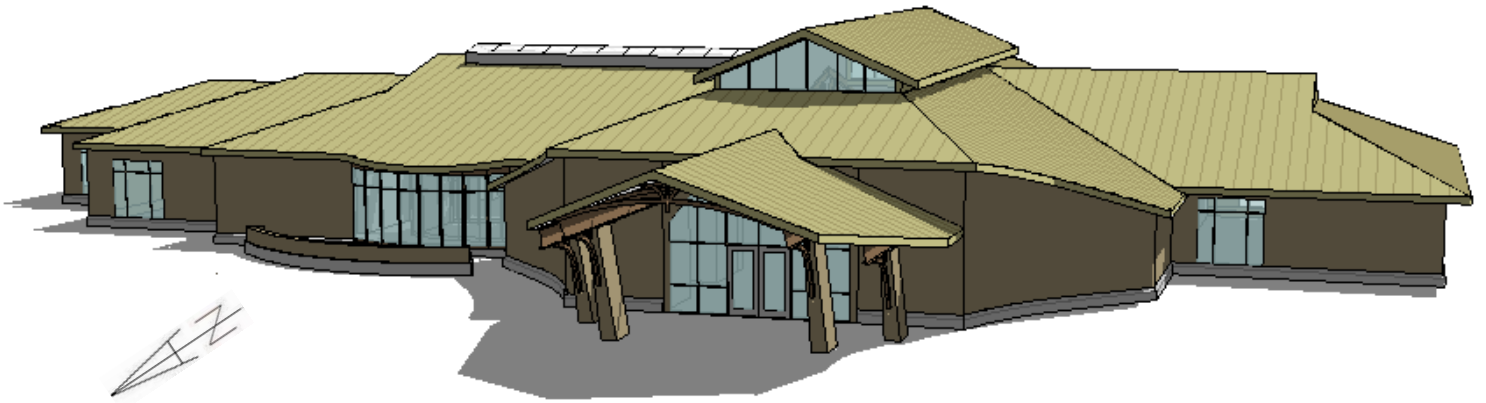


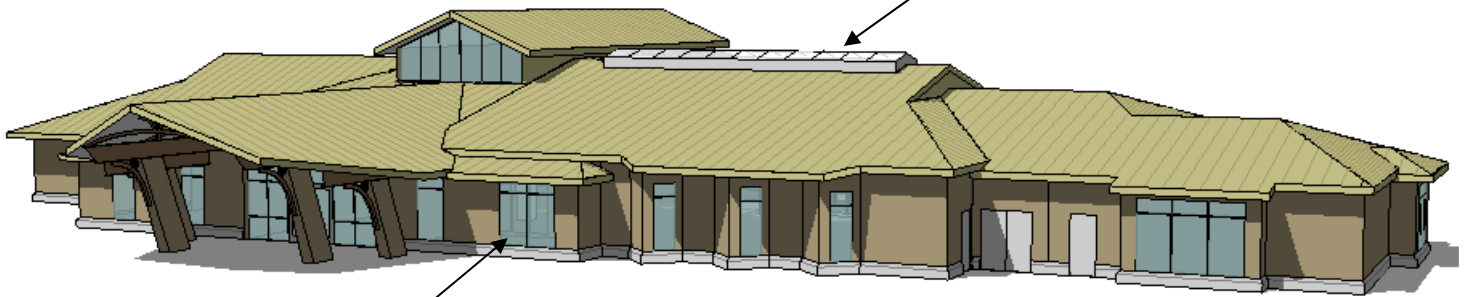
DAYLIGHT MODEL EXTERIOR BUILDING VIEW

Project Name:	Library
Project Location:	USA (South Central)
Room Description:	Library
Daylight Area:	102'-6" x 112'-6"



NORTHWEST ELEVATION

**KALWALL SKYLIGHT
(20%LT)**



**GLASS
(40%LT)**

SOUTHEAST ELEVATION

*Daylight simulations are based on weather data
supplied by the US Department of Energy.
No warranty expressed or implied
by Kalwall Corporation*

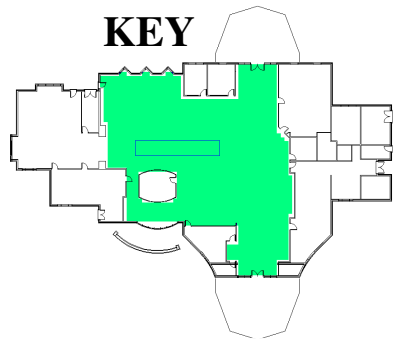
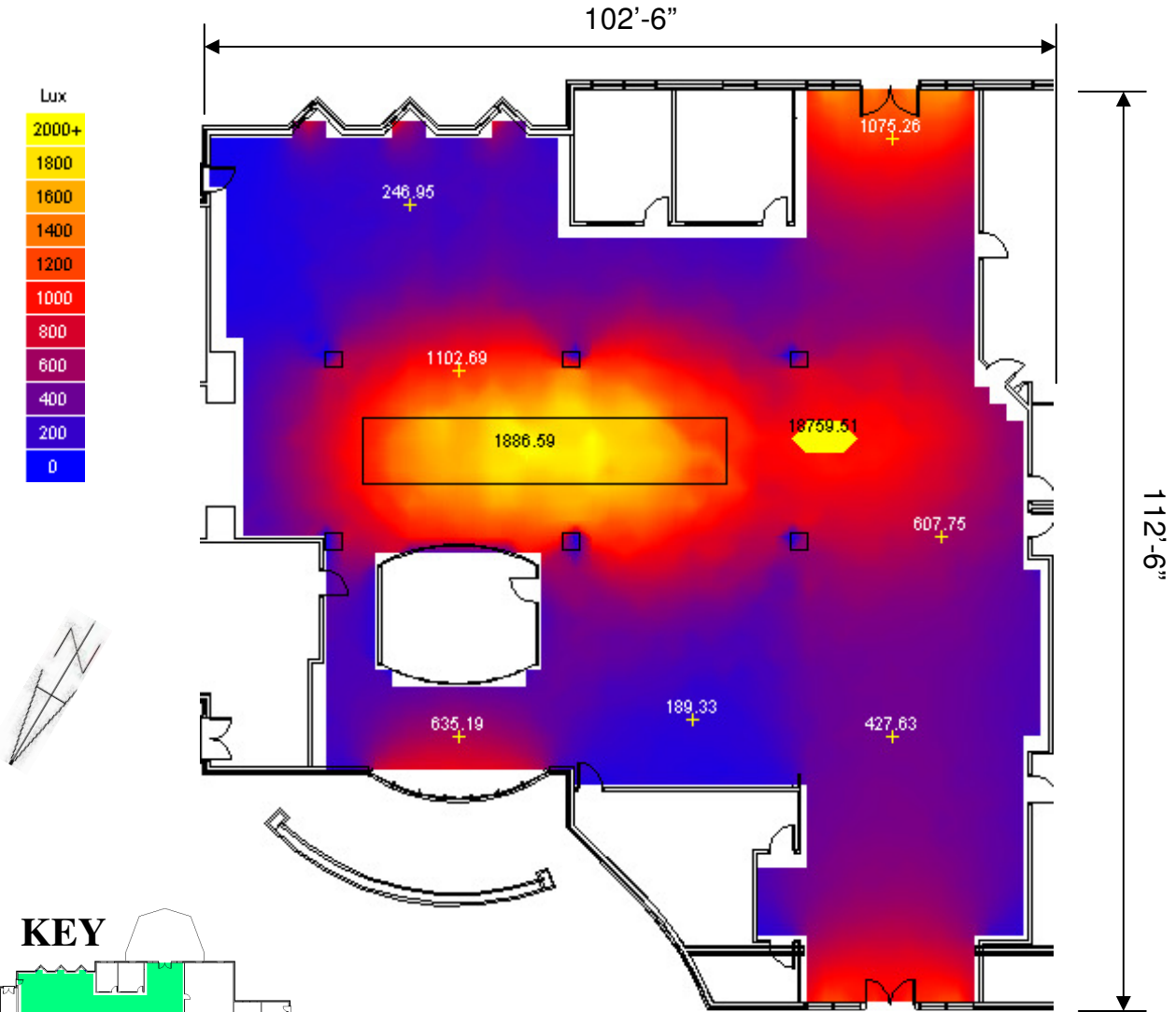
DAYLIGHT MODEL RESULTS

Project Name: Library	Sky Condition: Sunny
Project Location: USA (South Central)	Weather City Data: USA (South Central)
Room Description: Library	Model Date: September 21 st
Daylight Size: 102'-6" x 112'-6"	Model Time: 12:00 PM
Kalwall Application: Ridge-Roof Skylight	Kalwall Transmittance: 20%
Kalwall Size(s): (1) 44'-0" x 8'-0" (across flat)	Wall Reflectance: Off White
Glass Application: Windows/Doors	Ceiling Reflectance: White
Glass Sizes(s): Varies	Floor Reflectance: Neutral
Glass Transmittance: 40%	Daylight Autonomy: N/A

Radiance Illumination for September 21st at 12 pm
Average Value is 638 Lux

© Ecotect v2009

AS-SUBMITTED



Illumination for September 21st at 12 pm
10.76 Lux = 1 fc. Task height is 3'-0"

DAYLIGHT MODEL RESULTS

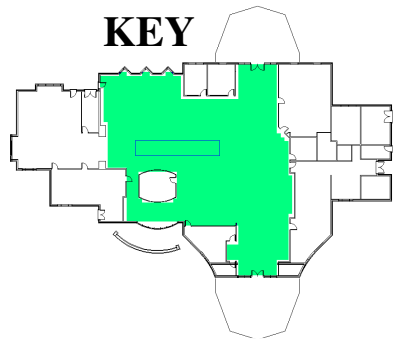
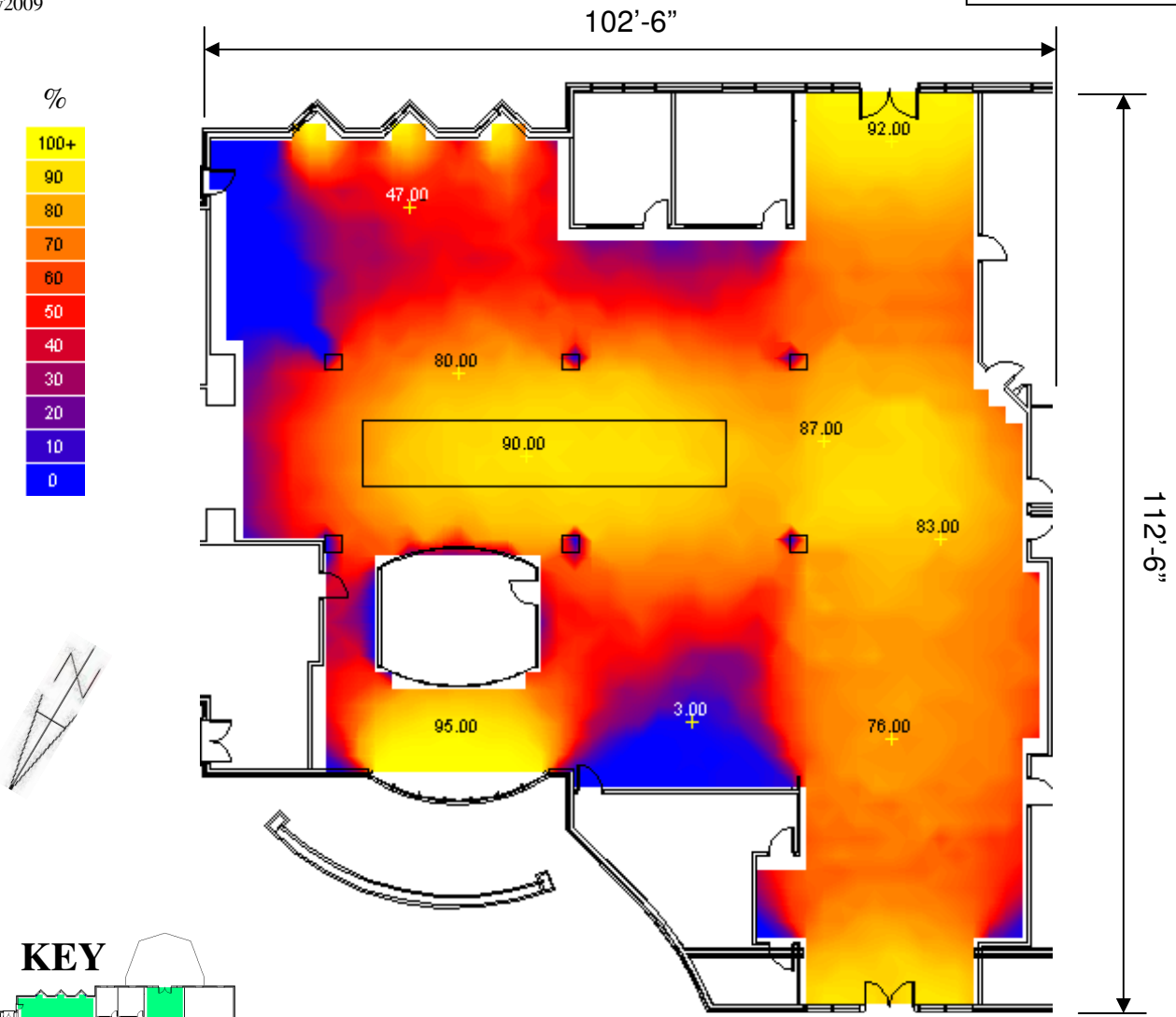
Project Name:	Fairwood Library	Sky Condition:	Yearly Average
Project Location:	USA (South Central)	Weather City Data:	USA (South Central)
Room Description:	Library	Model Date:	Full Year
Daylight Size:	102'-6" x 112'-6"	Model Time:	8:00 AM – 5:00 PM
Kalwall Application:	Ridge-Roof Skylight	Kalwall Transmittance:	20%
Kalwall Size(s):	(1) 44'-0" x 8'-0"(across flat)	Wall Reflectance:	Off White
Glass Application:	Windows/Doors	Ceiling Reflectance:	White
Glass Sizes(s):	Varies	Floor Reflectance:	Neutral
Glass Transmittance:	40%	Daylight Autonomy:	30 fc

Daylight Autonomy for 30 fc

Average Value is 63%

© Ecotect v2009

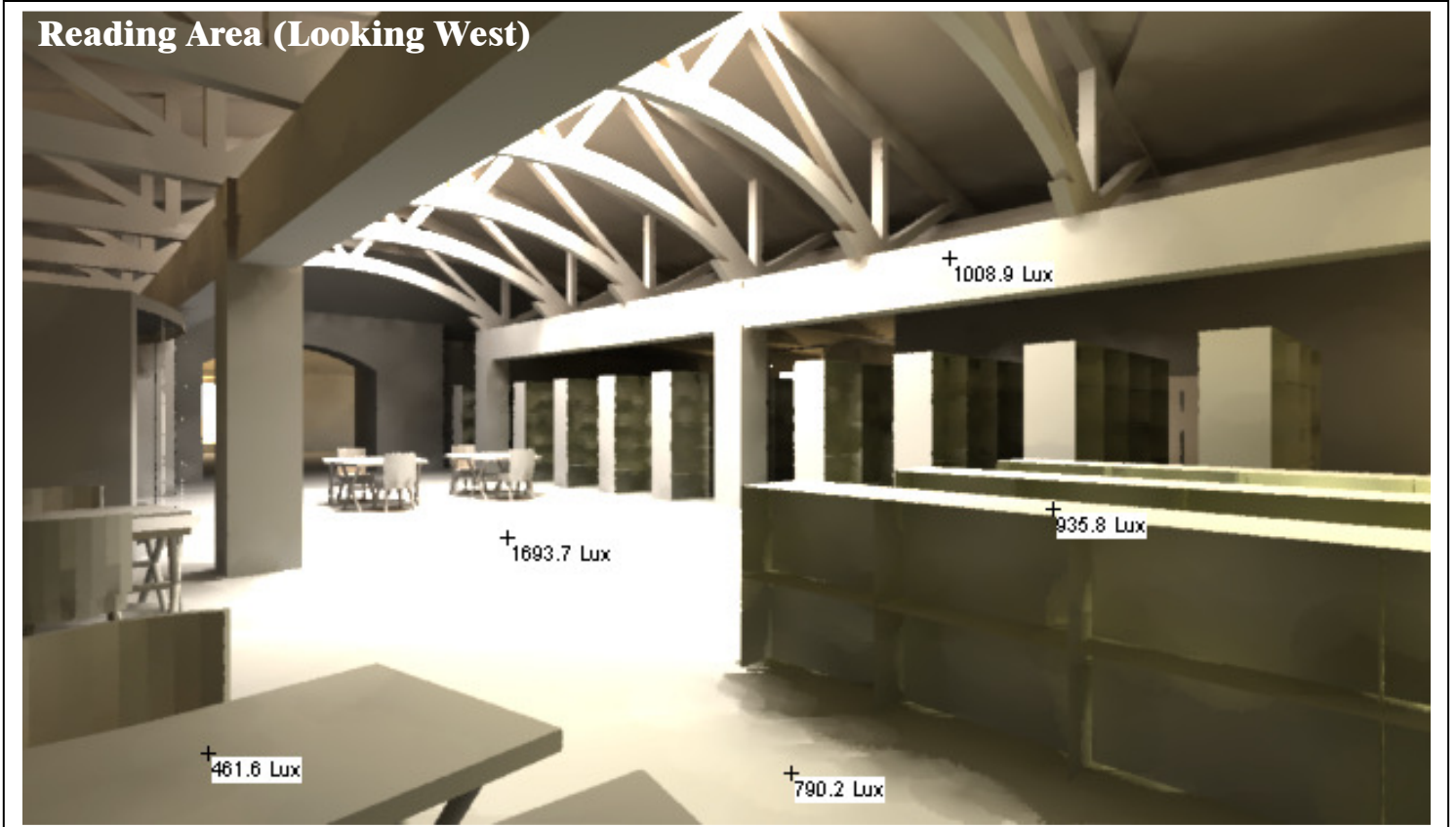
AS-SUBMITTED



Daylight Autonomy predicts the percentage of daylight hours where the illuminance meets or exceeds the desired task illuminance level. For this chart, 30 fc was chosen as the desired light level for the space. Task height is 3'-0" above the floor.

DAYLIGHT MODEL RESULTS

The following interior illumination renderings are for a clear day at 12pm on the autumn equinox:



DAYLIGHT MODEL RESULTS

The following interior illumination renderings are for a clear day at 12pm on the autumn equinox:

